

Material List Cubes



Materials

Our natural products are sustainable.

The acoustic effect is at the heart of the product: an aluminum frame filled with sheep's wool. You will find this in all our products.

The basics: profile

Our recycled aluminum is sourced from residual material from facade and interior construction. Our profiles can eventually be replaced and melted down into new profiles. Our standard profile is an anodic ice aluminum-look and is stronger and more wear-resistant than regular aluminum. In addition to white, black or gray, you can choose from one of our trend colours or bespoke RAL colours.

The content: wool

Sustainability is important at Deblick. That is why we consciously chose 100% sheep's wool, a natural product with

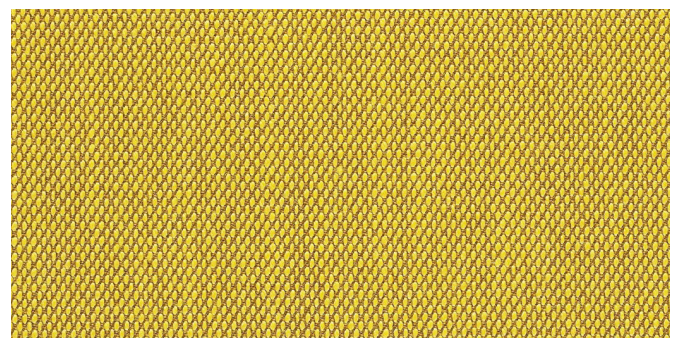
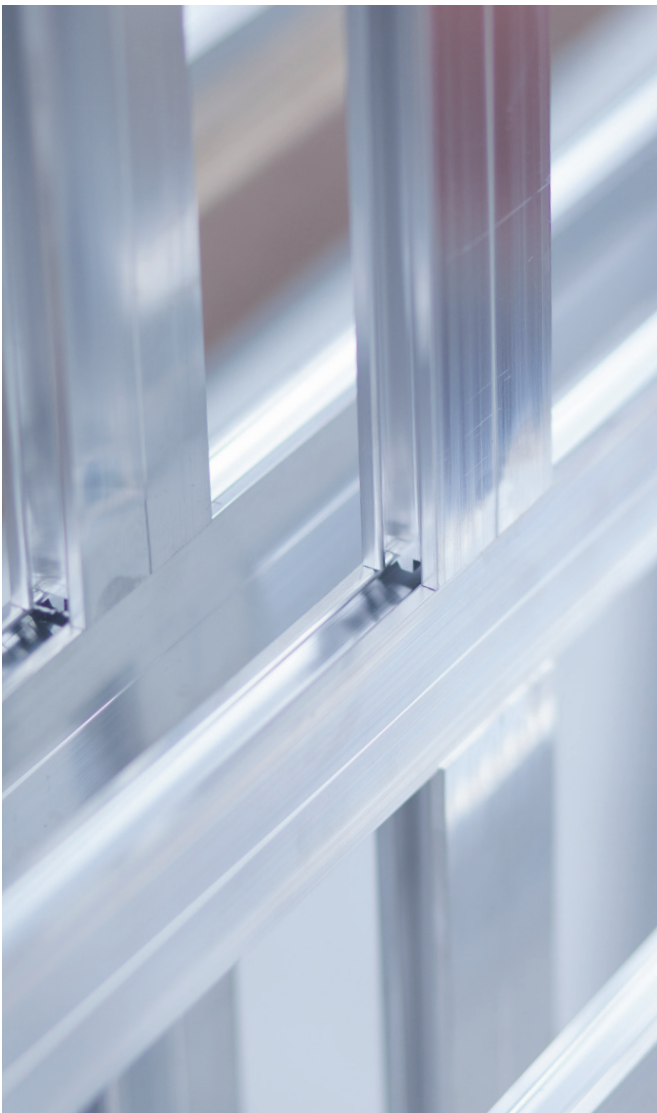
many positive properties for a good indoor climate. Wool is moisture regulating and fire retardant, but above all it is one of the best acoustic absorption materials available. It always retains its properties, making reuse easy.

Textile: color

With our own upholstery you can easily choose a color that suits the space and organization.

You can choose from:

- Our own Createx upholstery.
- Our basic collection Nova, Kvadrat, Camira and Gabriel upholstery.
- Your own design or visual for a personalized look.



Deblick is a certified company.



ecovadis

Profile colour options

Choose the colour that fits your space or corporate identity.

Stock colours:

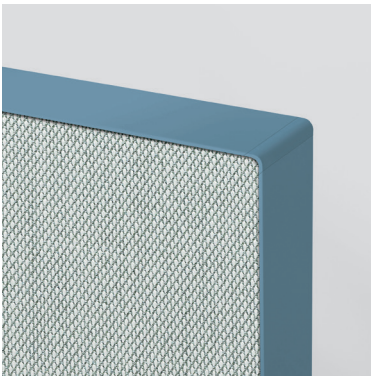


PURE WHITE
RAL 9010

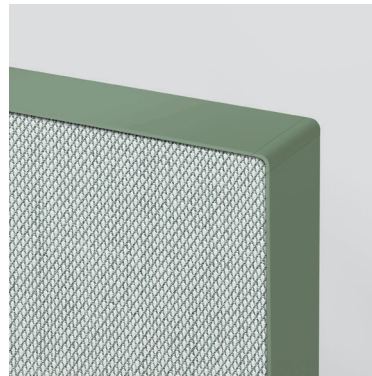


JET BLACK
RAL 9005

Examples of other RAL colours:



PASTEL BLUE
RAL 5024



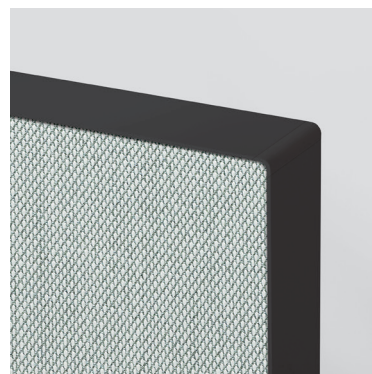
PALE GREEN
RAL 6021



PURPLE RED
RAL 3004



LIGHT GREY
RAL 7035



BLACK GREY
RAL 7021

We can customize our profiles in any RAL colour to suit your wishes or corporate identity.

Keep in mind this option adds 2 weeks to our delivery times!

Fabrics

Choose the fabric that fits your space or corporate identity.



From spaces to places

Fabric Types



M27/V27

Createx / Createx mixed

Fabric Type 1

Composition:	100% polyester
Maximum width:	320 cm
Weight:	250 g/m ² (± 3%)
Remarks:	INKTeX+BS® finishing for direct print with diverse inks.
Flame resistance:	With flame retardant treatment. DIN 4102 B1-certifikation for PES-Dekotex with INKTeX+FL treatment. DIN EN 13501 certificate for PES-Dekotex with INKTeX+FL.



Createx personalised

Fabric Type 1

Composition:	100% polyester
Maximum width:	320 cm
Weight:	250 g/m ² (± 3%)
Remarks:	INKTeX+BS® finishing for direct print with diverse inks.
Flame resistance:	With flame retardant treatment. DIN 4102 B1-certifikation for PES-Dekotex with INKTeX+FL treatment. DIN EN 13501 certificate for PES-Dekotex with INKTeX+FL.

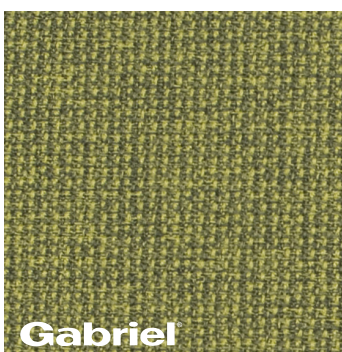


0031

Nova

Fabric Type 1

Composition:	100% WO, 25% PA
Maximum width:	138 cm
Weight:	600 gr/lm
Rubbing fastness:	EN ISO 105 x 12 (wet/dry) 3-4/4-5
Abrasion resistance:	40.000 Martindale, EN ISO 12947 1&2
Flame resistance:	BS 5852 (1979) • EN 1021 (1979) Cigarette and Match test Pass
Lightfastness:	EN ISO B02
Pilling:	EN ISO 12945-2 3-4



62066

Twist Melange

Fabric Type 2

Composition:	100% Trevira cs
Maximum width:	170 cm
Weight:	370 g/lm - 11.93 oz/lin.yd
Light fastness:	Scale 1-8, max. 8 - EN ISO 105-B02 5-7
Rubbing fastness:	Scale 1-5, max. 5 - EN ISO 105x12 (wet/dry) 4-5/4-5
Flammability:	ASTM E 84 Class I • DIN 4102 - B1 • NFP 92-503/504/505 M1 • BS 476 Part 7 class I • Class Uno UNI 9175 Class 1 I EMME • Class Uno UNI 9177 - Class 1 I EMME • Class Uno UNI 9174 - UNI 8457 • DIN EN 13501-1 B-s1,d0

Fabric Types

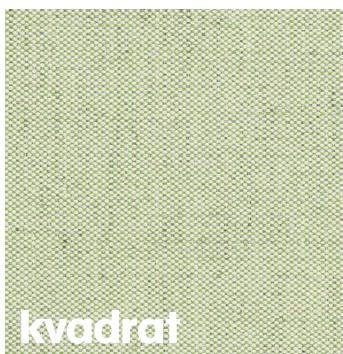


CUZ2S

Blazer

Fabric Type 2

Composition:	100% Virgin Wool. Non metallic dyestuffs
Maximum width:	140 cm
Weight:	460 g/m ² ±5%
Abrasion resistance:	50,000 Martindale cycles. 10 year guarantee.
Flame resistance:	ASTM E84 Class A (Adhered & Un-adhered) • BS 476 Part 7 Class 1 • BS EN 1021 Part 1 & 2 (Cigarette & Match) • BS 7176: Low Hazard • BS EN 13501 Part 1 Adhered Class D S1 D0 • NF D 60-013 • NFPA 260 + UFAC Class 1 • ÖNORM A 3800-1 • ÖNORM B 3825 • UNI 9175 Class 1 • US California Bulletin 117 5 (ISO 105 - B02)
Lightfastness:	



923

Floyd

Fabric Type 1

Composition:	50% polyester, 45% new wool worsted, 5% nylon
Maximum width:	140 cm
Weight:	370 g/m (11.93 oz/ly)
Abrasion resistance:	50.000 Martindale, EN ISO 12947
Flame resistance:	BS 5852 crib 5 with treatment • IMO FTP Code 2010 Part 8 • EN 1021-1/2 • US Cal. Bull. 117-2013 • ASTM E84 Class A Adhered • ASTM E84 Class A Unadhered • AS/NZS 3837 class 2 • BS 5852 part 1 with treatment
Lightfastness:	Note 6-7, ISO 105-B02
Pilling:	Note 3-4, EN ISO 1-5

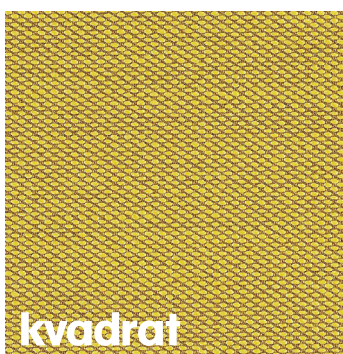


834

Revive 1

Fabric Type 1

Composition:	100% recycled polyester FR
Maximum width:	140 cm
Weight:	420 g/m (13.55 oz/ly)
Abrasion resistance:	60.000 Martindale, EN ISO 12947
Flame resistance:	BS 5852 Crib 5 with treatment • EN 1021-1/2 • DIN 4102 B1 • IMO FTP Code 2010: Part 8 • NF D 60 013 with treatment • Önorm B1/Q1 • UNI 9175 1IM US Cal. Bull. 117-2013
Lightfastness:	Note 5-7, ISO 105-B02
Pilling:	Note 4-5, EN ISO 12945



453

Steelcut Trio 3

Fabric Type 3

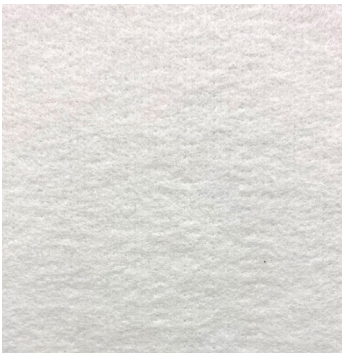
Composition:	90% new wool worsted, 10% nylon	
Weight:	770 g/m (24.84 oz/ly)	Maximum width: 140 cm
Rubbing fastness:	4-5/4-5 (wet/dry)	
Abrasion resistance:	100.000 Martindale, EN ISO 12947	
Flame resistance:	UNI 9175 1IM • BS 5852 part 1 • BS 5852 ignition source 3 • NF D 60 013 • SN 198 898 5.3 with treatment • US Cal. Bull. 117-2013 • EN 1021-1/2 • BS 5852 crib 5 with treatment • IMO FTP Code 2010 Part 8 • NFPA 260 • AS/NZS 1530.3	
Light fastness:	Note 5-7 ISO 105-B02	
Pilling:	Note 4 EN ISO 12945	

Acoustic fillings



Sheep's Wool

- Composition:** 40mm sheep's wool
- Weight:** 4000 gr/m²
- Flame resistance:** for the combustion of wool, 25,2% oxygen is needed. The air we breathe contains only 21% oxygen on average, which makes the material flame extinguishing. The flash point of wool can only be achieved at a temperature of circa 580°C.
- Sound absorption:** Sound absorption coefficient α_w 1.00 (NEN-EN-ISO 354).



Polyester Wool White

- Composition:** PET (up to 70 % recycled fibres)
- Weight:** 100 - 5000 g/m²
- Flame resistance:** DIN 4102
EN 13501
EN 54545-2
- Sound absorption:** Sound absorption coefficient Class A (ISO 354:2003).

From spaces to places